





Goodview

Chinese Leading Brand of Commercial Digital Signage Industry

Shanghai Goodview Electronics Technology Co., Ltd.



 www.goodview.com
 Service hotline: 400-138-8858

The product specifications are subject to change without prior notice.
The relevant data and images in this manual are for reference only, and the actual product shall prevail.
The final interpretation rights of this manual belong to Shanghai Goodview Electronics Technology Co., Ltd.

CVTE
Dream·Future

MAXHUB SEEWO  OSTECH



Contents

| | |
|-----------------------------------|----|
| Digital Signage Menu Board Series | 02 |
| Digital Signage Pro Series | 04 |
| Digital Signage Basic Series | 06 |
| Digital Signage Monitor Series | 08 |
| Digital Signage PCAP Series | 10 |
| Video Wall Series | 12 |
| Moveable A-Frame Series | 14 |
| Double-side Window Display Series | 16 |
| Freestanding Display Series | 18 |
| Elevator Screen Series | 20 |
| Hight Brightness Screen Series | 22 |
| Media Player Series | 24 |
| Digital Frame Series | 26 |
| SaaS Cloud Server Series | 28 |



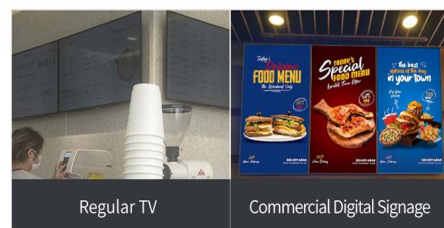
Digital Signage Menu Board Series

Size : 24、32、43、55 inch



Parameters

| Model | M24FAH | M32FAQ | M43FUH | M55FUH |
|------------------|---|----------------------------|----------------------------|----------------------------|
| Panel | 23.8 inches LED Backlight | 31.51 inches LED Backlight | 42.5 inches LED Backlight | 54.64 inches LED Backlight |
| Display Area(in) | 20.73×11.65 | 27.5×15.47 | 37.05×20.84 | 47.62×26.79 |
| Dimension(in) | 22.05×14.37×1.61 | 28.2×16.34×1.81 | 37.68×21.54×3.47 | 48.5×27.91×1.98 |
| Weight (lb) | GW17.2, NW12.6 | GW23.8, NW18.7 | GW40.2, NW33.8 | GW54.3, NW42.9 |
| Brightness | 700cd/m ² | 350cd/m ² | 700cd/m ² | 700cd/m ² |
| Response Time | 14ms | 8ms | 6ms | 6ms |
| VESA(in) | Desktop VESA | 15.75x7.87 | 15.75x7.87 & 15.75x15.75 | 15.75x7.87 |
| CPU | T972-SR Quad-Core A55 1.9GHz | | | |
| Memory | 2GB | | | |
| Storage | 8GB | | | |
| System | Android 9.0 | | | |
| Speaker | 2×2W 4Ω | | | |
| Interfaces | USB、LAN、WAN | | | |
| Resolution | 1920×1080 | | 3840×2160 | |
| Contrast Ratio | 1200: 1 | | 5000: 1 | |
| View Angle | 89° (U/D/L/R) | | 89° (U/D/L/R) | |
| Color Depth | 8bit, 16.7 Million colors | | 10bit, 1.07 Billion colors | |
| Timing | Multiple time period scheduled power on/off | | | |
| Orientation | Landscape | | Portrait、Landscape | |
| Backlight Life | 30000 Hours | | | |
| CMS | | | Saas CMS | |
| Color | White | | Black | |



Regular TV Commercial Digital Signage

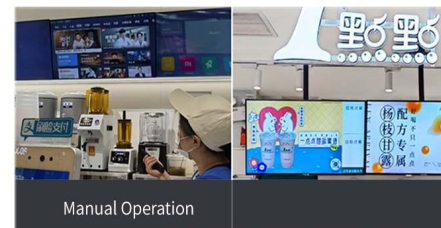
High brightness, high fidelity video footage

Original commercial PS panel with high brightness to show true colors in indoor environment



Support both landscape and portrait mode

Unique front-frameless design brings variety combination possibilities



Manual Operation

Plug and play, default signal channel settable

No TV boot screens. Support automatic identification of signal sources and custom selection of start-up channels



Dynamic multi-screen menu display

Supports multi-screen synchronization and display with frame synchronization, creating an eye-catching screen play and enhancing brand image



Split screen intelligently for partitions

Supports splitting screens to different partitions in horizontal or vertical formats, allowing users to allocate space more flexibly for each content partitions



Built-in CMS

It has a built-in content management system that allows users to edit and play content, enabling them to manage it easily and efficiently

Application Case





Digital Signage Pro Series

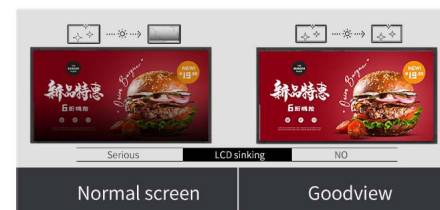
Size: 43、55、65、75、86、98 inch

Parameters

| Model | M43GUQ | M55GUQ | M65GUQ |
|-----------------------|-------------------------|---------------------------------------|-------------------------|
| Panel | 43 inches LED Backlight | 55 inches LED Backlight | 65 inches LED Backlight |
| Pixel Format | 3840×2160 | 3840×2160 | 3840×2160 |
| Display Area(in) | 37.05×20.84 | 47.63×26.79 | 56.24×31.63 |
| Dimension(in) | 37.98×21.75×2.81 | 48.54×27.7×2.81 | 57.61×32.99×3.01 |
| Brightness | | 500 cd/m ² | |
| View Angle | | 89° (U/D/L/R) | |
| Backlight Life | | 50000 Hours | |
| Working Time | | 16 /7 | |
| HDMI Output | | 1(HDMI Daisy chain,Up to 3*3) | |
| RS232 | | 1 | |
| USB Type-C | | 1(DP1.2,PD 65W,Network Sharing(100M)) | |
| System | | Android 11 | |
| Memory | | 4GB | |
| Storage | | 32GB | |
| Contrast Ratio | 5000: 1 | 4000: 1 | 1200: 1 |
| Sound | 2×10W | 2×10W | 2×10W |
| VESA (in) | 7.87×7.87 | 15.75×7.87 | 23.62×15.75 |
| Power Supply | | 100-240V~ 50/60Hz | |
| Power | | ≤0.5W | |
| Operation Temperature | | 0°C - 40°C | |
| Operating Humidity | | 10% - 90% | |
| Color | | Black | |



AI PQ adjustment
AI PQ Scene Recognition auto-adjusts picture quality for truer-to-life color and image detail



High haze rate with anti-glare
Anti-glare display with 25% haze rate, frame drifting function to prevent screen burn-in and protect against screen damage caused by long term static image



Easy achieve intelligent splicing
Supports 3*3 splicing and HDMI intelligent loop-through, enabling convenient multi-screen simultaneous display without a distributor



Plug and Play, default signal channel settable
No TV boot screens. Support automatic identification of signal sources and custom selection of startup channels

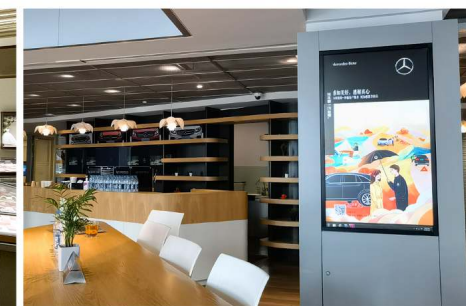


Built-in CMS
It has a built-in content management system that allows users to edit and play content, enabling them to manage it easily and efficiently



Even ultra narrow bezel
Ultra narrow bezel with metal texture craft shows the fashionable and modern style

Application Case

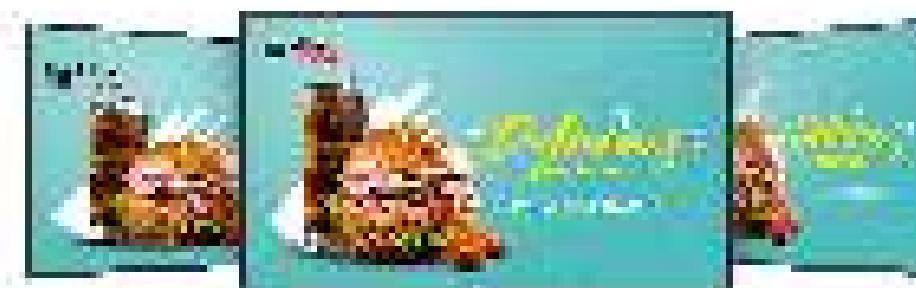


| Model | M75GUQ | M86GUQ | M98GUQ |
|-------------------------|-------------------------|---------------------------------------|-------------------------|
| Panel | 75 inches LED Backlight | 86 inches LED Backlight | 98 inches LED Backlight |
| Pixel Format | 3840×2160 | 3840×2160 | 3840×2160 |
| Display Area(in) | 64.95×36.53 | 74.61×41.97 | 84.99×47.81 |
| Dimension(in) | 66.36×37.94×3.21 | 76.02×43.38×3.21 | 87.12×49.94×3.13 |
| Brightness | | 500 cd/m ² | |
| View Angle | | 89° (U/D/L/R) | |
| Backlight Life(hours) | | 50000 Hours | |
| Working Time(hours) | | 16 /7 | |
| HDMI Output | | 1(HDMI Daisy chain,Up to 3*3) | |
| RS232 | | 1 | |
| USB Type-C | | 1(DP1.2,PD 65W,Network Sharing(100M)) | |
| System | | Android 11 | |
| Memory | | 4GB | |
| Storage | | 32GB | |
| Contrast Ratio | | 1200 | |
| Sound | 2×10W | 2×10W | 2×10W |
| VESA(in) | 31.50×23.62 | 31.50×23.62 | 31.50×23.62 |
| Power Supply | | 100-240V~ 50/60Hz | |
| Power | | ≤0.5W | |
| Operation Temperature | | 0°C - 40°C | |
| Operating Humidity | | 10% - 90% | |
| Color | | Black | |



Digital Signage Basic Series

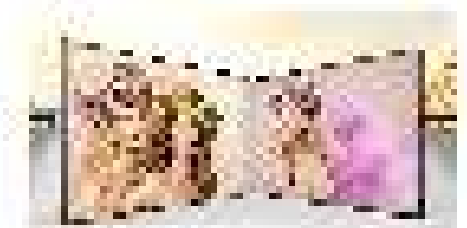
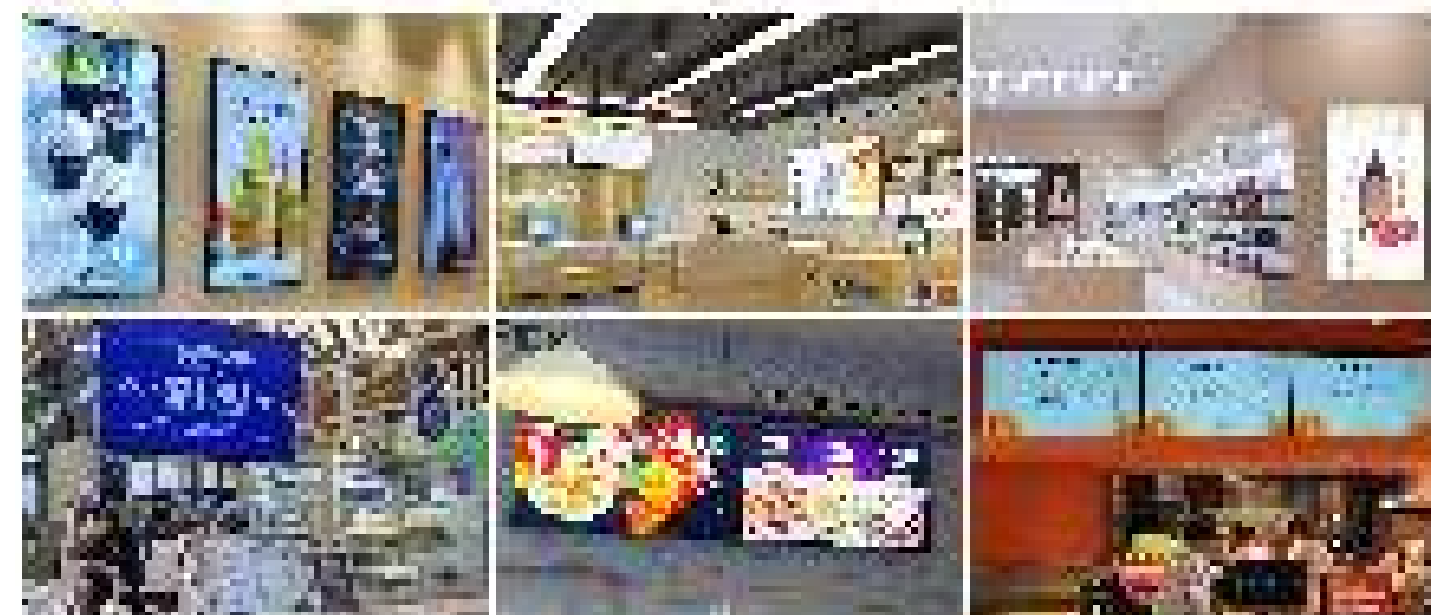
10" 15" 18" 24"



Parameter

| Item | Product Name | Model | Resolution | Weight |
|------|--------------|----------|------------|---------|
| 10" | 10" LCD | 10" LCD | 1280x800 | 1.5kg |
| 15" | 15" LCD | 15" LCD | 1920x1080 | 2.5kg |
| 18" | 18" LCD | 18" LCD | 1920x1080 | 3.5kg |
| 24" | 24" LCD | 24" LCD | 1920x1080 | 5.5kg |
| 32" | 32" LCD | 32" LCD | 1920x1080 | 10.5kg |
| 42" | 42" LCD | 42" LCD | 1920x1080 | 18.5kg |
| 55" | 55" LCD | 55" LCD | 1920x1080 | 28.5kg |
| 65" | 65" LCD | 65" LCD | 1920x1080 | 38.5kg |
| 75" | 75" LCD | 75" LCD | 1920x1080 | 48.5kg |
| 86" | 86" LCD | 86" LCD | 1920x1080 | 58.5kg |
| 98" | 98" LCD | 98" LCD | 1920x1080 | 68.5kg |
| 110" | 110" LCD | 110" LCD | 1920x1080 | 78.5kg |
| 121" | 121" LCD | 121" LCD | 1920x1080 | 88.5kg |
| 132" | 132" LCD | 132" LCD | 1920x1080 | 98.5kg |
| 143" | 143" LCD | 143" LCD | 1920x1080 | 108.5kg |
| 154" | 154" LCD | 154" LCD | 1920x1080 | 118.5kg |
| 165" | 165" LCD | 165" LCD | 1920x1080 | 128.5kg |
| 176" | 176" LCD | 176" LCD | 1920x1080 | 138.5kg |
| 187" | 187" LCD | 187" LCD | 1920x1080 | 148.5kg |
| 198" | 198" LCD | 198" LCD | 1920x1080 | 158.5kg |
| 209" | 209" LCD | 209" LCD | 1920x1080 | 168.5kg |
| 220" | 220" LCD | 220" LCD | 1920x1080 | 178.5kg |
| 231" | 231" LCD | 231" LCD | 1920x1080 | 188.5kg |
| 242" | 242" LCD | 242" LCD | 1920x1080 | 198.5kg |
| 253" | 253" LCD | 253" LCD | 1920x1080 | 208.5kg |
| 264" | 264" LCD | 264" LCD | 1920x1080 | 218.5kg |
| 275" | 275" LCD | 275" LCD | 1920x1080 | 228.5kg |
| 286" | 286" LCD | 286" LCD | 1920x1080 | 238.5kg |
| 297" | 297" LCD | 297" LCD | 1920x1080 | 248.5kg |
| 308" | 308" LCD | 308" LCD | 1920x1080 | 258.5kg |
| 319" | 319" LCD | 319" LCD | 1920x1080 | 268.5kg |
| 330" | 330" LCD | 330" LCD | 1920x1080 | 278.5kg |
| 341" | 341" LCD | 341" LCD | 1920x1080 | 288.5kg |
| 352" | 352" LCD | 352" LCD | 1920x1080 | 298.5kg |
| 363" | 363" LCD | 363" LCD | 1920x1080 | 308.5kg |
| 374" | 374" LCD | 374" LCD | 1920x1080 | 318.5kg |
| 385" | 385" LCD | 385" LCD | 1920x1080 | 328.5kg |
| 396" | 396" LCD | 396" LCD | 1920x1080 | 338.5kg |
| 407" | 407" LCD | 407" LCD | 1920x1080 | 348.5kg |
| 418" | 418" LCD | 418" LCD | 1920x1080 | 358.5kg |
| 429" | 429" LCD | 429" LCD | 1920x1080 | 368.5kg |
| 440" | 440" LCD | 440" LCD | 1920x1080 | 378.5kg |
| 451" | 451" LCD | 451" LCD | 1920x1080 | 388.5kg |
| 462" | 462" LCD | 462" LCD | 1920x1080 | 398.5kg |
| 473" | 473" LCD | 473" LCD | 1920x1080 | 408.5kg |
| 484" | 484" LCD | 484" LCD | 1920x1080 | 418.5kg |
| 495" | 495" LCD | 495" LCD | 1920x1080 | 428.5kg |
| 506" | 506" LCD | 506" LCD | 1920x1080 | 438.5kg |
| 517" | 517" LCD | 517" LCD | 1920x1080 | 448.5kg |
| 528" | 528" LCD | 528" LCD | 1920x1080 | 458.5kg |
| 539" | 539" LCD | 539" LCD | 1920x1080 | 468.5kg |
| 550" | 550" LCD | 550" LCD | 1920x1080 | 478.5kg |
| 561" | 561" LCD | 561" LCD | 1920x1080 | 488.5kg |
| 572" | 572" LCD | 572" LCD | 1920x1080 | 498.5kg |
| 583" | 583" LCD | 583" LCD | 1920x1080 | 508.5kg |
| 594" | 594" LCD | 594" LCD | 1920x1080 | 518.5kg |
| 605" | 605" LCD | 605" LCD | 1920x1080 | 528.5kg |
| 616" | 616" LCD | 616" LCD | 1920x1080 | 538.5kg |
| 627" | 627" LCD | 627" LCD | 1920x1080 | 548.5kg |
| 638" | 638" LCD | 638" LCD | 1920x1080 | 558.5kg |
| 649" | 649" LCD | 649" LCD | 1920x1080 | 568.5kg |
| 660" | 660" LCD | 660" LCD | 1920x1080 | 578.5kg |
| 671" | 671" LCD | 671" LCD | 1920x1080 | 588.5kg |
| 682" | 682" LCD | 682" LCD | 1920x1080 | 598.5kg |
| 693" | 693" LCD | 693" LCD | 1920x1080 | 608.5kg |
| 704" | 704" LCD | 704" LCD | 1920x1080 | 618.5kg |
| 715" | 715" LCD | 715" LCD | 1920x1080 | 628.5kg |
| 726" | 726" LCD | 726" LCD | 1920x1080 | 638.5kg |
| 737" | 737" LCD | 737" LCD | 1920x1080 | 648.5kg |
| 748" | 748" LCD | 748" LCD | 1920x1080 | 658.5kg |
| 759" | 759" LCD | 759" LCD | 1920x1080 | 668.5kg |
| 770" | 770" LCD | 770" LCD | 1920x1080 | 678.5kg |
| 781" | 781" LCD | 781" LCD | 1920x1080 | 688.5kg |
| 792" | 792" LCD | 792" LCD | 1920x1080 | 698.5kg |
| 803" | 803" LCD | 803" LCD | 1920x1080 | 708.5kg |
| 814" | 814" LCD | 814" LCD | 1920x1080 | 718.5kg |
| 825" | 825" LCD | 825" LCD | 1920x1080 | 728.5kg |
| 836" | 836" LCD | 836" LCD | 1920x1080 | 738.5kg |
| 847" | 847" LCD | 847" LCD | 1920x1080 | 748.5kg |
| 858" | 858" LCD | 858" LCD | 1920x1080 | 758.5kg |
| 869" | 869" LCD | 869" LCD | 1920x1080 | 768.5kg |
| 880" | 880" LCD | 880" LCD | 1920x1080 | 778.5kg |
| 891" | 891" LCD | 891" LCD | 1920x1080 | 788.5kg |
| 902" | 902" LCD | 902" LCD | 1920x1080 | 798.5kg |
| 913" | 913" LCD | 913" LCD | 1920x1080 | 808.5kg |
| 924" | 924" LCD | 924" LCD | 1920x1080 | 818.5kg |
| 935" | 935" LCD | 935" LCD | 1920x1080 | 828.5kg |
| 946" | 946" LCD | 946" LCD | 1920x1080 | 838.5kg |
| 957" | 957" LCD | 957" LCD | 1920x1080 | 848.5kg |
| 968" | 968" LCD | 968" LCD | 1920x1080 | 858.5kg |
| 979" | 979" LCD | 979" LCD | 1920x1080 | 868.5kg |
| 990" | 990" LCD | 990" LCD | 1920x1080 | 878.5kg |

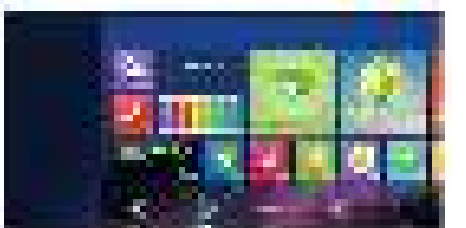
Application Case



Application Case
A digital signage screen displaying a colorful abstract pattern.



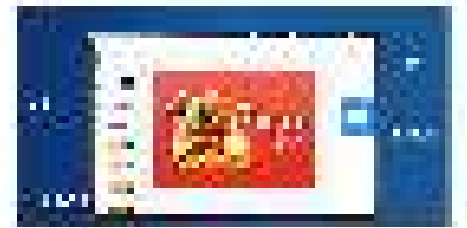
Application Case
Two digital signage screens displaying a blue and white graphic.



Application Case
A digital signage screen displaying a colorful grid of icons.



Application Case
A digital signage screen displaying a news or information graphic.



Application Case
A digital signage screen displaying a red and white graphic.



Application Case
A digital signage screen displaying a dark background with text.



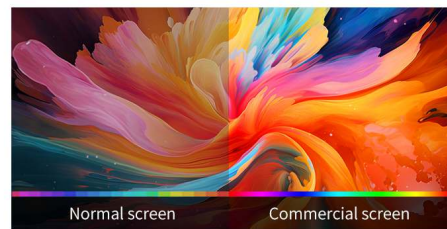
Digital Signage Monitor Series

Size : 32、43、49、55 inch



Parameters

| Model | M32SDQ | M43SDQ | M49SDQ | M55SDQ |
|---------------------|---|----------------------------|------------------------|----------------------|
| Panel | 31.51 inches LED Backlight | 42.51 inches LED backlight | 49inches LED backlight | 55 inches |
| Display Area (in) | 27.50×15.47 | 37.05×20.84 | 42.28×23.78 | 42.93×24.46 |
| Dimension (in) | 28.20×16.34×1.81 | 37.94×21.96×1.81 | 42.93×24.46×2.24 | 47.62×26.79×2.24 |
| Weight (lb) | GW23.79, NW18.65 | GW31.08, NW24.69 | GW49.16, NW39.90 | GW54.23, NW42.88 |
| Brightness | 400cd/m ² | 450cd/m ² | 400cd/m ² | 450cd/m ² |
| Response Time | 8ms | 8ms | 8ms | 12ms |
| VESA (in) | 7.87×15.75 | 15.75×7.87 | 7.87×15.75&15.75×15.75 | 15.75×7.87 |
| Backlight Life | 30000 Hours | 30000 Hours | 30000 Hours | 50000 Hours |
| Interfaces | USB、LAN、WAN | | | |
| View Angle | 89° (U/D/L/R) | | | |
| Play mode | Playlist, multi windows play, column play | | | |
| Resolution | 1200: 1 | | | |
| Contrast Ratio | 1920×1080 | | | |
| Color Depth | 8bit, 16.7 Million colors | | | |
| Timer | Multi Time period Auto On/Off | | | |
| Screen hanging mode | Portrait, Landscape | | | |
| CMS | Saas CMS | | | |
| Color | Black | | | |



Exquisite realism, unparalleled high definition
The incredible and lifelike are able to showcase a wider spectrum of colors. Capturing subtle differences for flawless color expression



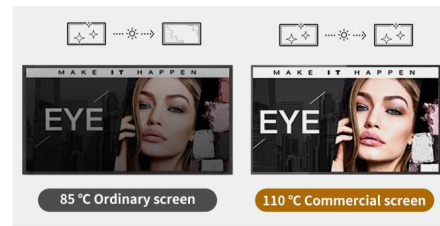
Support both landscape and portrait mode
Unique front-frameless design brings variety combination possibilities



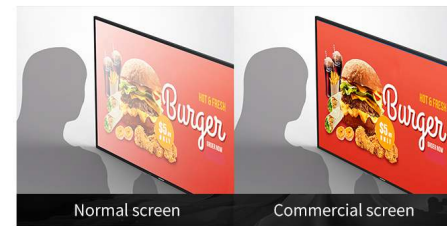
Original commercial IPS panel
Can highly restore the picture color, viewing angle is wide, even if different angles to enjoy the same visual effect



Ultra-thin body
Fast running and compatible with various apps, easy to operate, ensured data protection through encryption methods, perfect for diverse needs

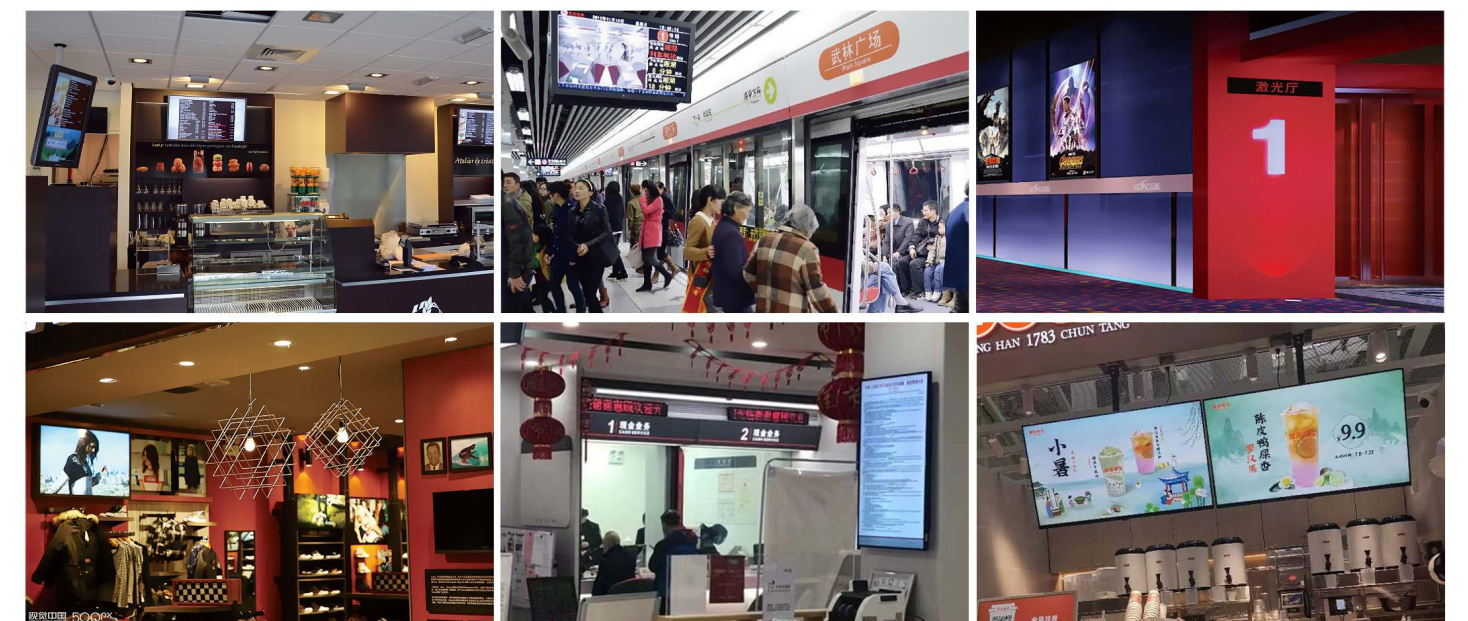


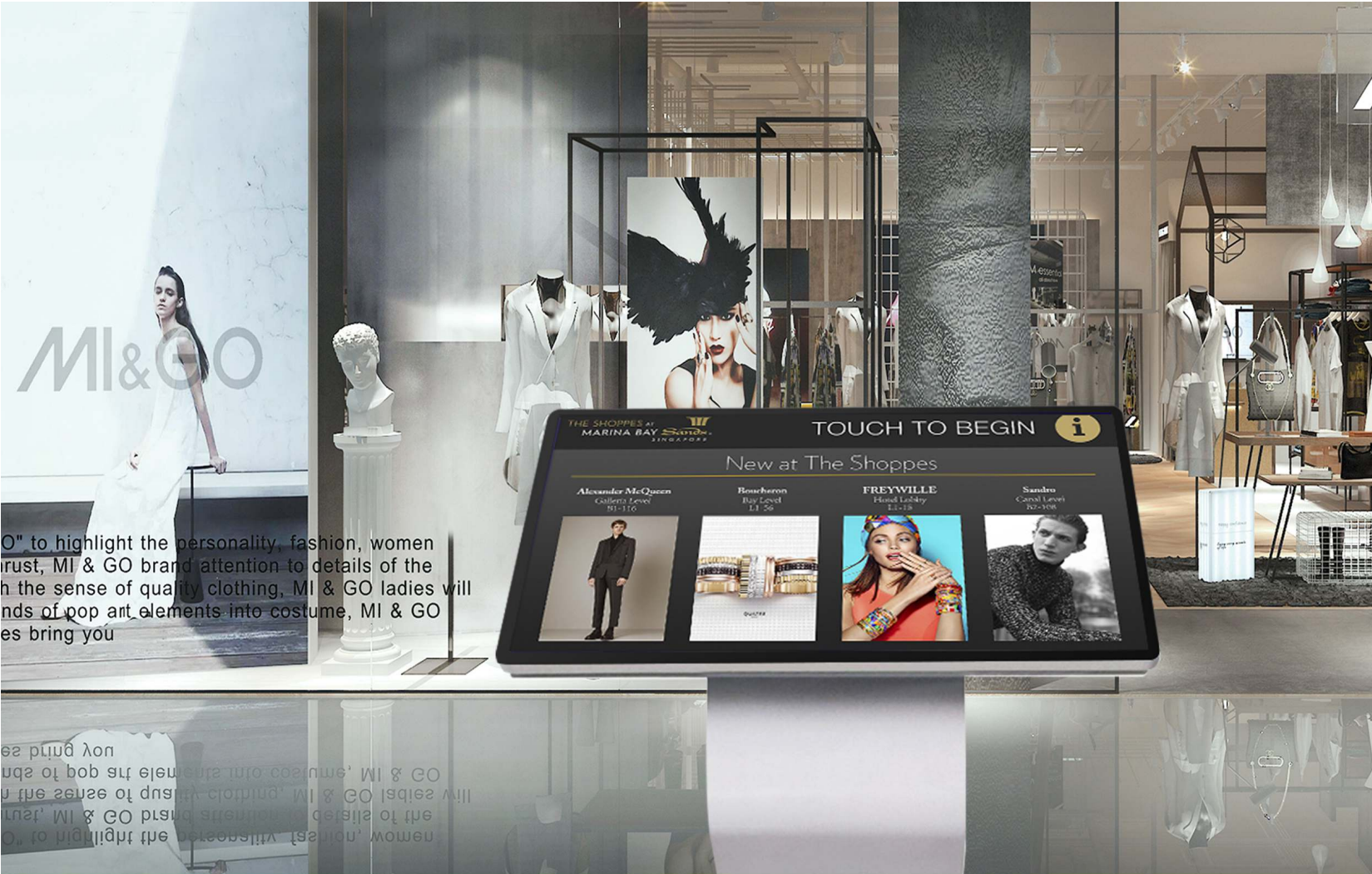
High temperature work without direct sunlight
No dark spots and no afterimages in high-temperature work; support long hours of work, no LCD sinking and no yellow spots



178°wide viewing angle
100% color gamut coverage, true and lifelike. High contrast enhances the distinction between bright and dark areas, creating an immersive experience

Application Case





MI & GO brand attention to details of the sense of quality clothing, MI & GO ladies will bring you

MI & GO brand attention to details of the sense of quality clothing, MI & GO ladies will bring you

Digital Signage PCAP Series

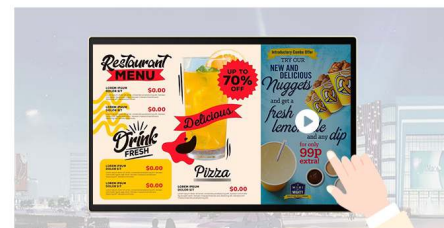
Size: 22、27、32、43、49、55 inch



10-point high-precision capacitive touch
Precise contact, fast response, screen without water ripple, with dynamic image clarity technology



Original commercial IPS panel
Can highly restore the picture color, viewing angle is wide, even if different angles to enjoy the same visual effect



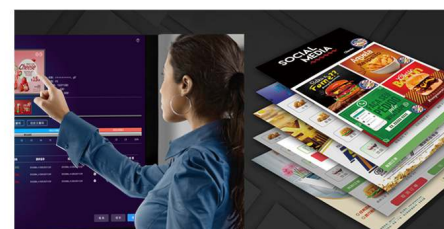
Split screen intelligently for partitions
Compatible with multiple content formats combined with split screen playback, allowing users to allocate space more flexibly for each content partitions



High-end configuration, full compatibility
Support network publishing and U disk local playback, plug and play, display information as you wish



Android system
This device smoothly runs various applications on its powerful CPU and optimized quad-core processor for Android



Built-in interactive content creation and publishing software
Support custom creation, video images, scrolling subtitles, weather and other forms of touch interactive content production and publishing



Parameters

| Model | TC22H1 | TC27H1 | TC32H1 | TC43H1 | TC55H1 |
|------------------|--|-------------------------|-------------------------|----------------------------|----------------------------|
| Panel | 22 inches LED Backlight | 27 inches LED Backlight | 32 inches LED Backlight | 42.51 inches LED Backlight | 54.64 inches LED Backlight |
| Display Area(in) | 18.7×10.49 | 23.50×13.20 | 27.46×15.43 | 37.02×20.80 | 47.58×26.75 |
| Dimension(in) | 20.85×12.64×1.67 | 25.59×15.30×1.79 | 29.83×17.81×1.94 | 39.28×23.06×2.05 | 50.20×29.36×2.24 |
| Weight(lb) | GW17.9, NW13.5 | GW23.2, NW18.5 | GW29.1, NW22.7 | GW46.3, NW37.5 | GW81.4, NW64.8 |
| Brightness | 250cd/m ² | 300cd/m ² | 400cd/m ² | 450cd/m ² | 450cd/m ² |
| Response Time | 14ms | 14ms | 8ms | 8ms | 9ms |
| VESA(in) | 15.75x7.87 | | | | |
| CPU | RK3288 GHz ARM Cortex A17 (1.6GHz) | | | | |
| Memory | 2GB | | | | |
| Storage | 8GB | | | | |
| System | Android 7.1 | | | | |
| Resolution | 1920×1080 | | | | |
| Contrast Ratio | 1000: 1 | 1000: 1 | 1200: 1 | 1200: 1 | 1200: 1 |
| Backlight Life | 30000 Hours | | | | |
| Speaker | Stereo 2×2W 4Ω | | | | |
| Play mode | Landscape、Portrait、Split display、Play List | | | | |
| Hanging Mode | Horizontal/Vertical Wall plate / VESA mounting | | | | |
| Touch Type | Capacitive | | | | |
| Touch Point | 10 Point | | | | |
| Communication | USB、LAN、WAN | | | | |
| Timing | Multiple time period scheduled power on/off | | | | |
| Color | Aluminum alloy frame + black shell | | | | |

Application Case



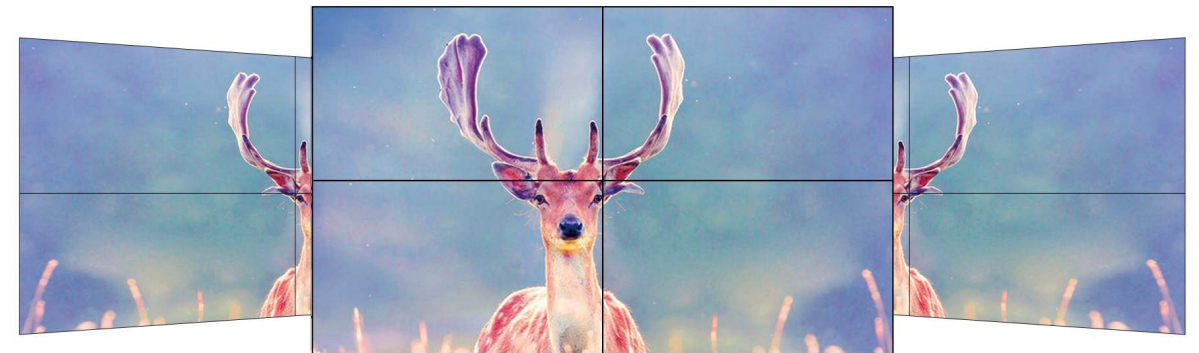


Tap into your Inner Creative Genius

How to Find new, groundbreaking ideas and inspirations from the world around you

Video Wall Series

Size: 55 inch



0.88mm piece

1.8mm piece

0.88mm piece

Parameters

| Model | PD55N10 | PD55NP |
|------------------|-------------------------|----------------------------|
| Display | 55 inches LED Backlight | 55 inches LED Backlight |
| Bezel | 1.88mm | 0.88mm |
| Display Area(in) | 47.62×26.79 | 47.62×26.79 |
| Dimension(in) | 47.72×26.89×4.62 | 47.62×26.82×4.73 |
| Weight(lb) | GW107, NW48.5 | GW99.2, NW44.1 |
| Brightness | | 500cd/m ² |
| Response Time | | 8ms |
| Master chip | | TSUMV56RUU-Z1 |
| Resolution | | 1920×1080 |
| Contrast Ratio | 1000: 1 | 1100: 1 |
| View Angle | | 89° (U/D/L/R) |
| Color Depth | | 10bit, 1.07 Billion colors |
| Orientation | | Landscape / Portrait |
| OSD Language | | Chinese/English |
| CMS | | Screencontrol |
| Border Color | | Black |



Original industrial IPS hard screen, super wide color gamut

IPS high brightness commercial splicing screen, support more than 4K ultra-high resolution splicing, fine picture, color realistic



Dynamic compensation, 3D noise reduction

3D picture quality digital processing circuit with dynamic compensation, 3D noise reduction function, can effectively prevent screen burning phenomenon



Multiple sizes, multiple bezels available

Provide 0.88mm, 1.8mm, 3.5mm bezel, and 46", 49", 55" and other specifications to meet different scenes of application options



Intelligent split screen

Arbitrary division, combination, roaming, etc., support a variety of split-screen mode, so that limited space to show more details



Anti-glare special surface treatment

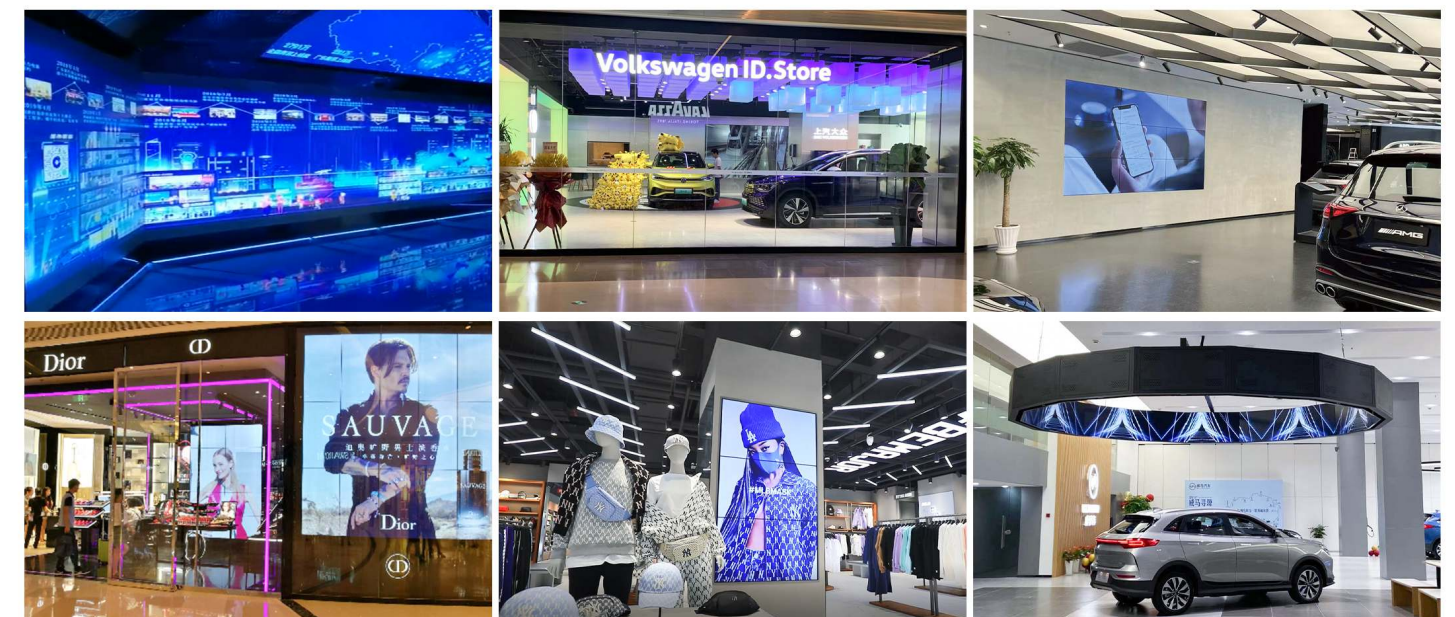
Removing residual image, the picture is not distorted



Provide door-to-door installation service

From production to installation, the whole process of one-to-one professional cooperation, so that customers in the purchase to save heart and effort, no worries

Application Case





Moveable A-Frame Series

Size: 43 inch



Free dragging, no "line" binding

Configuration with 50AH high-density lithium battery, up to 12 hours of endurance, promotional free display, for the sales of elegant speed



Industrial-grade IPS commercial display

Under high temperature, commercial-grade industrial panels can withstand temperatures up to 110 degrees Celsius without any black spots



IP65 protection level

With IP65 level of splash and water resistance, no fear of wind, dust and water immersion against complex outdoor environment without pressure



700&1500cd/m² brightness

Can automatically adjust the screen brightness according to changes in ambient light to meet the needs of different external lighting conditions require different brightness levels



Built-in CMS

It has a built-in content management system that allows users to edit and play content, enabling them to manage it easily and efficiently



Dual stereo surrounded sound

The product is equipped with an integrated dual stereo surrounded sound. The sound moves with the light and shadow to produce a better advertising effect



Parameters

| Model | PF43HL1 | PF43HL3 |
|-----------------------|---|-----------------|
| Panel | 42.51 inches LED Backlight | |
| Display Area(in) | 37.13×20.92 | |
| Dimension(in) | 23.81×47.04×18.82 | |
| Carton Size(in) | 56.30×29.65×25.31 | |
| Weight(lb) | GW118.9, NW84.0 | GW133.4, NW98.6 |
| Brightness | 700cd/m² | 1500cd/m² |
| Installation | Floor-standing | |
| Contrast Ratio | 1000: 1 | 1200: 1 |
| Product Power | 73 W | 121W |
| Audio/Video Interface | Video: Video formats such as MPEG1/MPEG2/MPEG4/AVI/WMV/MKV/TS/FLV; Audio: MP3 and other audio formats; Image: JPG/JPEG/BMP/PNG and other image formats; Text: TXT | |
| IP waterproof grade | IP65 | |
| Standby Time | 10-12Hrs | |
| Color | Black/White | |
| Resolution | 1920×1080 | |
| Backlight Life | 30000 Hours | |
| Color | 8bit, 16.7 Million colors | |
| CPU | RK 3288W Quad Core ARM Cortex A17 (up to 1.6GHz) | |
| System | Android 7.1 | |
| Power Supply | AC~100-240V | |
| Hanging mode | Floor-standing | |
| Response Time | 12ms | |
| View Angle | 89° (U/D/L/R) | |
| Language | Chinese/English | |
| Working Environment | 0-40°C 10%-80% %RH | |

Application Case





Double-side Window Display Series

Size: 43、55 Inch



IPS LCD panel

High brightness, high saturation display, ultra-long service life, 178° wide viewing angle, so you can enjoy the feast of perspective



Disruptive innovation, slim and lightweight

With a thickness of only 22mm, it features an extremely slim and lightweight, making it compact and convenient for various display scenarios, showcasing the beauty of technological luxury



High temperature work

Industrial-grade high-temperature LCD, high-temperature work without black spots, no residual images on the screen for a long time, LCD does not sink, no yellow spots



Double-sided same display/different display

Double-sided different brightness, support double-sided different display, suitable for windows and other double-sided display application scenarios



Split screen intelligently for partitions

Compatible with multiple content formats combined with split screen playback, allowing users to allocate space more flexibly for each content partitions



Built-in CMS

Support network, USB and other content distribution methods, cloud production and distribution, to achieve unified, convenient and efficient management of promotional content across regions



Parameters

| Model | D43H4 | D55H1 | D55R1 |
|---------------------|---|--------------------------|--|
| Panel | 43 inches LED Backlight | 55 inches LED Backlight | 55 inches LED Backlight |
| Display Area(in) | 20.83×37.04 | 26.79×47.62 | 26.74×47.58 |
| Dimension(in) | 22.31×49.11×1.15 | 32.17×58.24×0.85 | 51.86×28.62×3.15 |
| Carton size(in) | 53.40×6.73×26.70 | 36.73×62.84×6.38 | 58.06×35.67×10.04 |
| Weight(lb) | GW52.91, NW43.00 | GW77.2, NW57.3 | GW88.2, NW99.2 |
| Brightness | 1000&700cd/m ² | 550&550cd/m ² | 1000cd/m ² &3500cd/m ² |
| Resolution | 1920×1080 | | 1080×1920/2160×3840 |
| CPU | Quad core A17 | | Quad-core A55 |
| GPU | Mali-T764 | | Mali-G52 2EE |
| Memory | 2G (Optional 4G) | | 4G |
| Storage | 16G (Optional 32G) | | 32G |
| System | Android 7.1 | | Android 11.0 |
| Orientation | Portrait | | Portrait |
| Response Time | 8ms | | 9ms |
| Contrast Ratio | 1200: 1 | | 1300:1 |
| Color | White | | Black |
| Backlight life | ≥30000 hour | | ≥30000 hour |
| Communication | USB、LAN、WAN | | USB、LAN、WAN |
| Power supply | AC~100-240V (50/60Hz) | | AC~100-240V (50/60Hz) |
| Timing | Multiple time period scheduled power on/off | | Multiple time period scheduled power on/off |
| CMS | Saas CMS | | Saas CMS |
| Language | Chinese/English | | Chinese/English |
| Working Environment | 0-40°C 10%-80% %RH | | 0-40°C 10%-80% %RH |

Application Case





Freestanding Display Series

Size: 49、55、65 inch



10-point high-precision capacitive touch

Precise contact, fast response, screen without water ripple, with dynamic image clarity technology



Original commercial IPS panel

Can highly restore the picture color, viewing angle is wide, even if different angles to enjoy the same visual effect



Remote management, split screen interaction

Built-in interactive content creation, allows for easy creation of interactive programs, supports online publishing and local playback via USB, plug and play



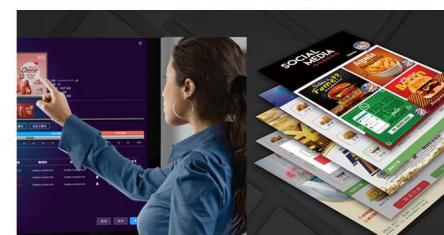
High-end configuration, full compatibility

Support network publishing and U disk local playback, plug and play, display information as you wish



One key lock screen, secure and controllable

One key lock function, after opening the remote control, USB, mouse, etc. are locked to prevent unauthorized operation of unauthorized personnel in public places



Built-in interactive content creation and publishing software

Support custom creation, video images, scrolling subtitles, weather and other forms of touch interactive content production and publishing



Parameters

| Model | L49H10 | L55H10 | L65H10 | L49H10C | L55H10C |
|---------------------|---|----------------------------|---------------------------------|--|-----------------------------------|
| Panel | 49 inches LED Backlight | 54.64 inches LED Backlight | 65.41 inches LED Backlight | 49 inches LED Backlight | 54.64 inches LED Backlight |
| Display Area(in) | 42.24 × 3.74 | 47.66 × 26.83 | 56.20 × 31.59 | 42.24 × 23.74 | 47.66 × 26.83 |
| Dimension(in) | 72.56 × 26.20 × 1.62 | 75.26 × 29.29 × 1.62 | 82.99 × 34.79 × 3.65 | 73.63 × 26.20 × 1.62 | 76.32 × 29.29 × 1.62 |
| Weight(lb) | GW172.0, NW127.9 | GW205.0, NW153.2 | GW224.9, NW202.9 | GW172, NW127.9 | GW205.0, NW153.2 |
| Brightness | 400cd/m ² | 530cd/m ² | 500cd/m ² | 400cd/m ² | 530cd/m ² |
| Contrast Ratio | 1200: 1 | 1300: 1 | 1200: 1 | 1200: 1 | 1300: 1 |
| Response Time | 8ms | 9ms | 8ms | 8ms | 9ms |
| CPU | RK3288 GHz ARM Cortex A17(1.6GHz) | | RK3399 Six core 64 bit (1.8GHz) | | RK3288 GHz ARM Cortex A17(1.6GHz) |
| Memory | 2GB | | 4GB | | 2GB |
| Storage | 8GB | | 32GB | | 8GB |
| System | Android 7.1 | | | | |
| Touch Type | NO | | | Capacitive | |
| Touch Point | NO | | | 10 Point | |
| Frame Response | NO | | | <15ms | |
| Input method | NO | | | Fingers, touch pens and other opaque objects | |
| Orientation | Portrait | | | | |
| Speaker | Stereo 2×10W 4Ω | | | | |
| Play mode | Playlist, multi windows play, column play | | | | |
| Smart Volume | Time-sharing volume | | | | |
| Timing | Multiple time period scheduled power on/off | | | | |
| Communication | USB、LAN、WAN | | | | |
| INPUT VOLTAGE | AC~110-240V (50/60Hz) | | | | |
| View Angle(CR>10) | 89° (U/D/L/R) | | | | |
| Installation | Floor-standing | | | | |
| CMS | Saas CMS | | | | |
| Backlight life | 30000 Hours | 30000 Hours | 50000 Hours | 30000 Hours | 30000 Hours |
| Multimedia | Video: MPEG1/MPEG2/MPEG4/AVI/WMV/MKV/TS/FLV and other video formats; Audio: MP3 and other audio formats; Image: JPG/JPEG/BMP/PNG/GIF and other image formats; Text: TXT | | | | |
| Working Environment | 0-40°C 10%-80% %RH | | | | |
| Watch dog | Support | | | | |
| Color | white with gold aluminum frame / black with silver aluminum frame | | | | |

Application Case





Elevator Screen Series

Size: 19、32 inch



Status monitoring, one-touch alarm

Support the one-key alarm function, when the elevator fails, the trapped person can click the alarm button of the terminal equipment to contact the emergency .rescue personnel in the first time



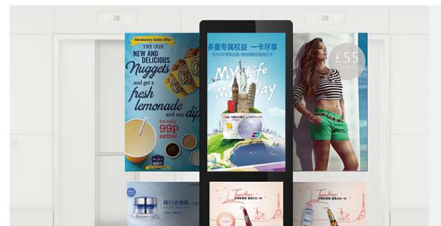
Visual Intercom

Support visual intercom function, rescuers can directly initiate video intercom with the digital signage terminal in the accident elevator through the background, and can start video calls



Built-in CMS software,Support remote audio and video distribution

Remote network management, supporting videos, pictures, web pages, etc. Interactive program editing, time slot program preset, seamless switching at intervals are available



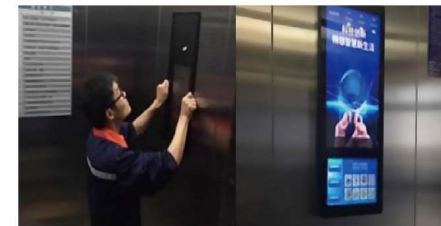
Multi-Screen Disparate Display

Support custom split screen, screen area can be arbitrarily divided, horizontal and vertical screens can be arbitrarily combined, support the composite use of touch query and interaction, to achieve diversification of operational functions



Support custom NFC function

When phone nears the screen, users can get detailed information , which support guiding the formation of real consumption and improving the conversion rate of advertising



Media and property operate on the same platform

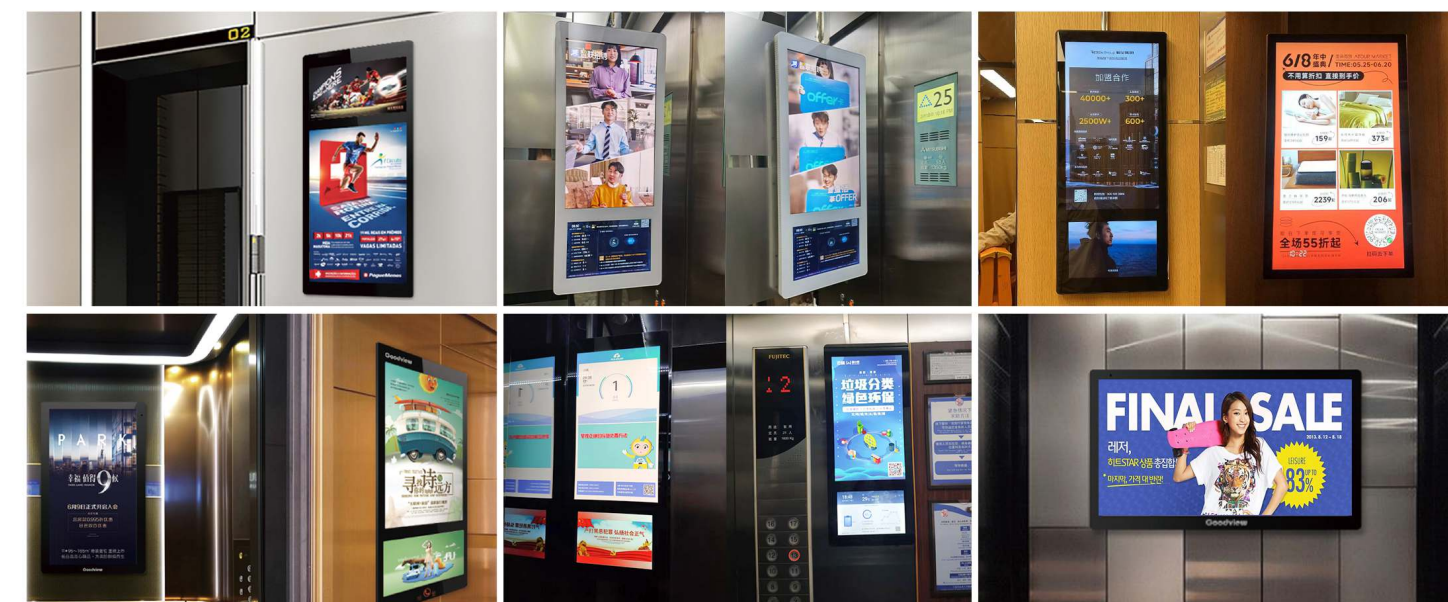
Managing the same platform separately, the media company is responsible for the operation of advertisements, and the property for the maintenance of elevator public welfare content

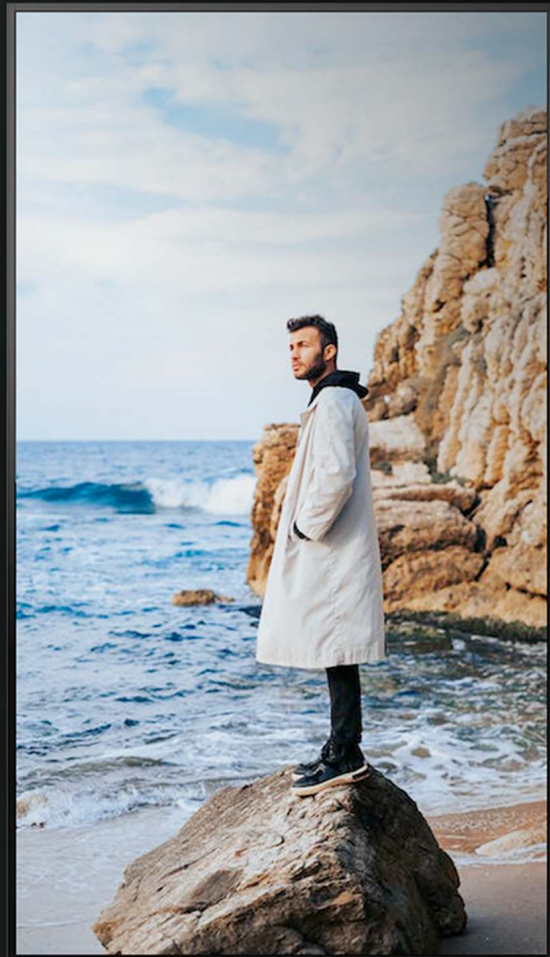


Parameters

| Model | PF19EH7 | PF32EH6 |
|-------------------------|--|---------------------------------|
| Panel | 18.5+10.1 inches LED Backlight | 31.51+18.5 inches LED Backlight |
| Display Area(in) | 16.09×9.03/5.29×8.49 | 27.50×15.47/16.13×9.07 |
| Dimension(in) | 10.79×25.20×1.16 | 40.94×18.5×1.97 |
| Carton Size(in) | 28.66×16.30×4.17 | 46.65×24.80×7.68 |
| Weight(lb) | GW 12.2, NW10.0 | GW47.4, NW40.2 |
| Brightness | 225 /225cd/m ² | 400 /250cd/m ² |
| Resolution | 1366×768/1280×800 | 1080×1920/1366×768 |
| Other Interfaces | USB 2.0 (TypeA) ×1 | |
| CPU | RK 3288 GHz ARM Cortex A17 (Highest1.8GHz) | |
| GPU | GHz ARM Mail-764 | |
| Memory | 2GB | |
| Storage | 8GB | |
| Color Depth | 8bit, 16.7 Million colors | |
| Hanging Method | Portrait (with bracket) | |
| Color | White | Black |
| Language | Chinese/English | |
| Service Life | 30000 Hours | |
| Watchdog Reset Function | Support | |
| Hanging Mode | Vertical | |
| Supply Power | DC 12V | |
| Work Environment | 0~40°C 10%~85%RH No condensation | |

Application Case





High Brightness Screen Series

Size : 43、55inch



Original IPS high-brightness commercial-grade screens

3500 nits brightness and high contrast screen, ensuring high color accuracy and picture quality restoration for commercial retail



Wide-temperature LCDs and intelligent temperature control cooling systems

Preventing screen black spots caused by direct sunlight and ensure precise display under strong light, intelligent temperature control for efficient cooling and stable operation



Built-in light adjustment system that adapts to external lighting

Adjusting display brightness based on changes in ambient light to save energy consumption



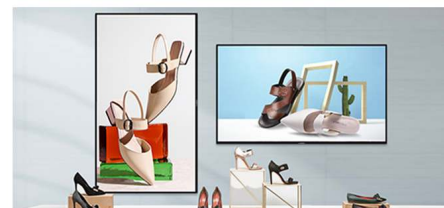
User-friendly design with built-in and external remote control devices

Significantly improving operational efficiency and allowing for convenient placement of controls, ensuring efficient maintenance with its enclosed design



Integrated Store Signage Cloud system

Easy and efficient remote centralized management of devices and program content, enabling automatic scheduled content switching



Supports both landscape and portrait installation

For various commercial retail scenarios, accommodating diverse and personalized spatial designs

Parameters

| Model | M43SAR | M55SAR |
|-------------------|---|-------------------------|
| Panel | 43 inches LED Backlight | 55 inches LED Backlight |
| Display Area (in) | 37.00×20.83 | 47.62×26.79 |
| Dimension (in) | 38.04×2184×373 | 48.57×27.73×3.70 |
| Weight (lb) | GW49.73, NW40.47 | GW77.6, NW62.2 |
| Brightness | 3500cd/m ² | 3500cd/m ² |
| Response Time | 8ms | 6ms |
| VESA (in) | 15.75×15.75 | 23.62X23.62/23.62X15.75 |
| Contrast Ratio | 1200:1 | 1300:1 |
| CPU | Quad core A17 | |
| Memory | 2GB | |
| Storage | 8GB | |
| System | Android7.1 | |
| Speaker | 2.0 | |
| Communication | USB、LAN、WAN | |
| Resolution | 1920 × 1080 | |
| View Angle | 178°/178°(H/V) | |
| Color Depth | 1.07M(10bit) | |
| Timing | Multiple time period scheduled power on/off | |
| Orientation | Portrait、Landscape | |
| Backlight life | ≥30000 hour | |
| Color | Black | |

Application Case





Media Player Series

Model: EP6A、EP66



EP6A



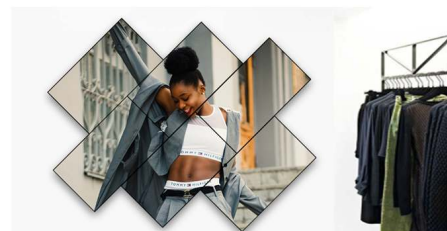
EP66



EP40B

Parameters

| Type | Model | EP6A | EP40B | EP66 |
|-----------------------|---------------------------|--------------------------------------|--------------------------------------|--------------------------------------|
| Operating System | OS Version | Android11 | Android 7.1 | Android 7.1 |
| | RAM | 4GB | 2GB | 4GB |
| | ROM | 32GB | 32GB | 32GB |
| | CPU | Quad-Core A53 | Quad-CoreA17 | Six cores (A72+A53) |
| | GPU | Mali-450 MP2 | Mali-T764 | Mali-T864 |
| Electrical Parameters | Power input | DC 5V/2A | DC 12V | DC 12V |
| | Max Power Consumption | 10W | 10W | 10W |
| | Standby Power Consumption | ≤0.5W | ≤0.5W | ≤0.5W |
| I/O Interface | HDMI OUT | HDMI2.0, supports up to 2K@60Hz | HDMI2.0, supports up to 4K 30Hz | HDMI signal output |
| | USB 2.0 | For system upgrade/data transmission | For system upgrade/data transmission | For system upgrade/data transmission |
| | RS232 | / | serial port | serial port |
| | IR_EX | / | Remote extension cable port | 3.5mm remote extension cable socket |
| | AUDIO OUT | 3.5 mm headphone jack | 3.5 mm headphone jack | Audio linear output interface |
| | RJ45 IN | 10/100Mbps | 10/100Mbps | 10/100Mbps |
| | Dimensions (L×W×H)(in) | 4.00x4.00x0.80 | 8.94x5.08x1.24 | 8.94x5.09x1.18 |
| Size/Weight | Package Dimensions(in) | 7.68x4.72x2.20 | 17.72x16.54x9.06 | 17.72x16.54x9.06 |
| | Gross Weight(lb) | 0.71 | 25.57 | 25.57 |
| | Power Adapter | ×1 | ×1 | ×1 |
| Accessories | Remote Control | ×1 | ×1 | ×1 |
| | AAA Battery | ×2 | ×2 | ×2 |
| | Working Temperature | 0°C~40°C | 0°C~40°C | 0°C~40°C |
| Environmental Factors | Working Humidity | 10%~80%RH | 10%~80%RH | 10%~80%RH |
| | Storage Temperature | -10°C~55°C | -10°C~55°C | -10°C~55°C |
| | Storage Humidity | 10%~80%RH | 10%~80%RH | 10%~80%RH |



Alien Cloud Stitching

The built-in cloud splicing function supports up to 100 screens splicing at any angle, and special patterns can be easily done



Built-in CMS software

SaaS cloud service supports remote unified management, centralized remote control in the cloud, rapid release of materials on PC or mobile terminals, etc



Rich interface

The media player is equipped with rich interfaces, all round high-speed input and output



Intelligent split screen, multi-screen linkage

Supports multiple zones within the same screen to display different content, allowing users to allocate space for each content source more flexibly



4K/1080P HD color output

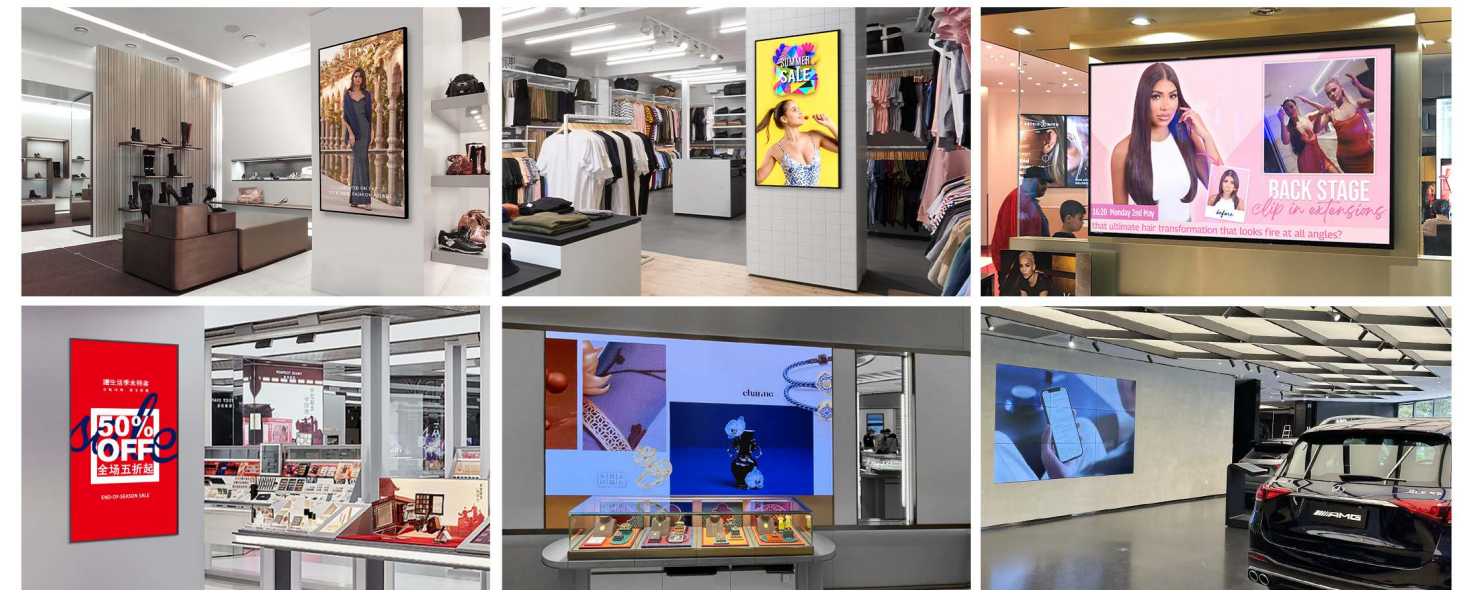
Built-in decoding, supports 4K or 1080P Full HD



Safe, reliable and easy to operate

The program is not afraid of tampering, two-way encryption to ensure the security of broadcast information

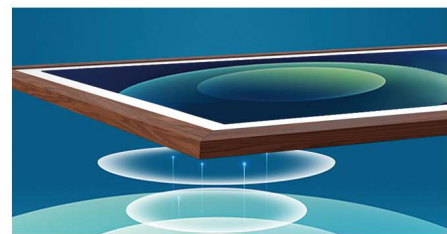
Application Case





Digital Frame series

Size: 27 inch



Technology sense magnetic suction power supply

Innovative magnetic suction technology, safe and reliable. New intelligent chip to stabilize power supply current and enhance power supply stability



HD anti-glare paper-like screen technology

The perfect vision, what you see is extraordinary. The use of paper-like screen technology, anti-glare, clear picture quality, more colorful and textured



Built-in famous paintings

Built-in rich famous paintings, paper visual experience, consistent with the effect of natural light reflecting on the paintings in the gallery



Photo Cloud Sharing

Use APP to break the space constraint, share beautiful images and share life anytime, anywhere



Vintage original wood picture frames

Selection of environmentally friendly logs, artistic appearance, hand-carved, crafted



Built-in audio

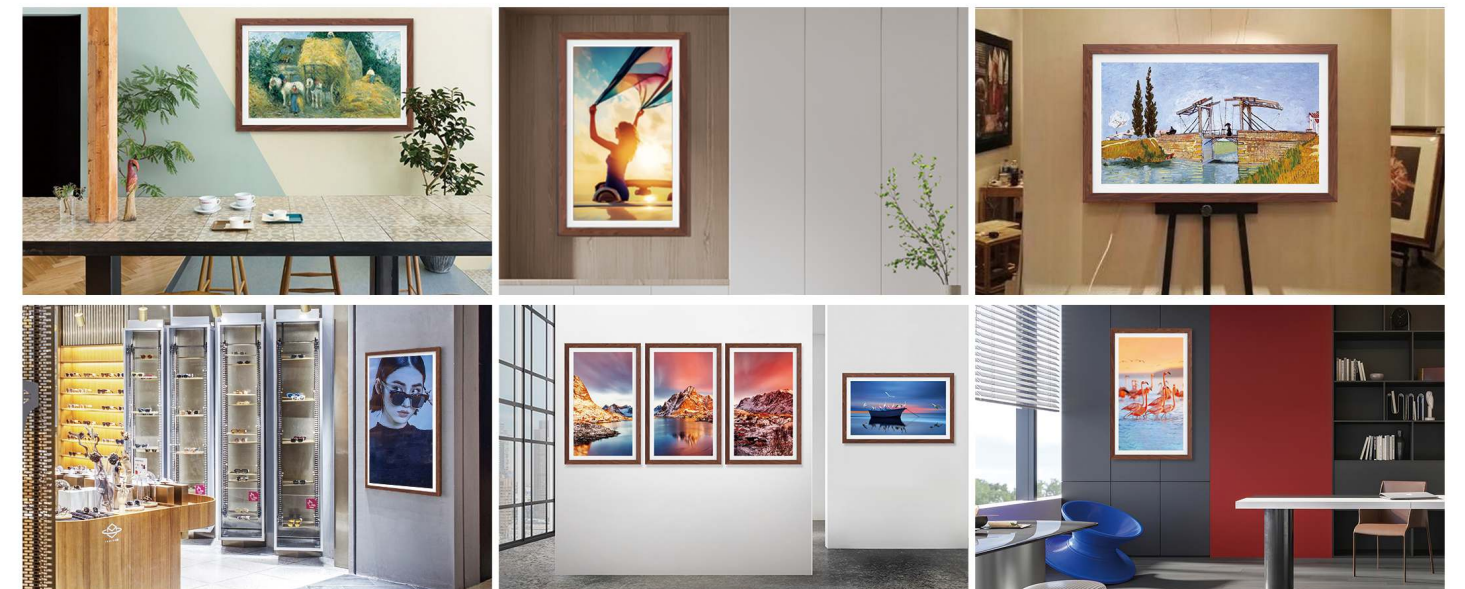
Built-in audio, audio and video integration, immersive experience



Parameters

| Model | A27HA1 |
|--------------------|---|
| Panel | 27 inches LED Backlight |
| Display Area(in) | 23.54×13.24 |
| Dimension(in) | 28.00×17.70×1.34 |
| Weight (lb) | GW17.0, NW11.9 |
| Brightness | 300cd/m ² |
| Resolution | 1920×1080 |
| View Angle | 89° (U/D/L/R) |
| Atomization degree | 25% haze |
| Color gamut | 72% |
| Speaker | Stereo 1.5W 8Ω*2 |
| Orientation | Landscape/Portrait |
| OSD Language | Chinese |
| Play mode | Landscape、Portrait、Landscape and Portrait custom display orientation |
| Communication | LAN、WAN |
| CPU | UNISOC UIS8581 /8 Core Cortex A55 |
| Memory | 2GB |
| Storage | 32GB |
| Response Time | 14ms |
| Backlight life | 30000 Hours |
| Watchdog | Support |
| Timing | Scheduled power on/off |
| VESA(in) | 3.937×3.937 |
| Installation | Hanging Plate |
| Contrast Ratio | 1000: 1 |
| Color Depth | 6bit, 16.7 Million colors |
| Accessories | Power adaptor ×1,M4*30 screws4,Double sided Tape x10,Gradienter ×1,Installation paper×1 |
| Color | Pine wood、White Birch、Black Walnut |

Application Case





Comprehensive retail commercial display service provider



Good Management

01 Terminal management



Easy To Use

02 Smart Release



High Efficiency

03 Multi-platform docking



Strong Incoming Traffic

04 Dynamic creative content



More Reliable

05 Information Security



Zero Burden

06 Proactive service

Goodview Cloud

Content

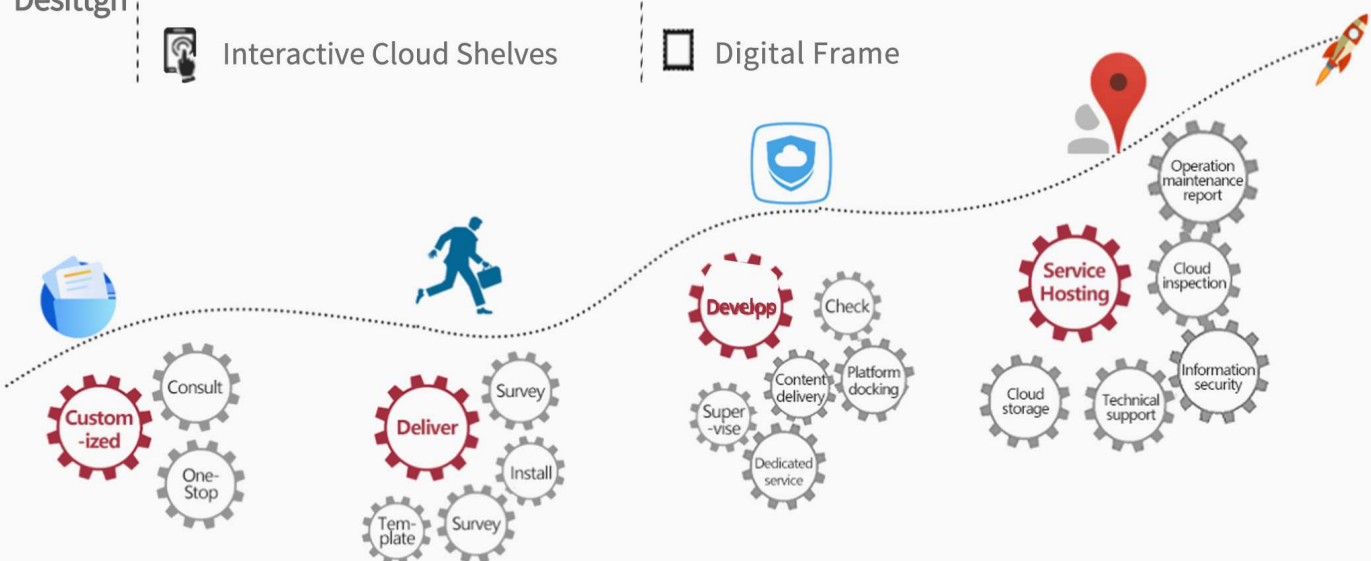
- Consult: Digital Signage Basic
- Consult: Digital Signage Pro
- Desitgn: Media Player
- Desitgn: Interactive Cloud Shelves

Hardware

- LED: LED
- High Brightness Screen
- Moveable A-Frame
- Digital Frame

Cloud Platform

- SaaS
- OaaS



Application Scenario



- ① Digital Signage Pro Series
- ② Double-side Window Display
- ③ LED
- ④ Digital Signage PCAP Series
- ⑤ Moveable A-Frame
- ⑥ Video Wall
- ⑦ Digital Signage Basic Series
- ⑧ Elevator Screen
- ⑨ Freestanding Display
- ⑩ OLED transparent

Store Signage Cloud Service Package

